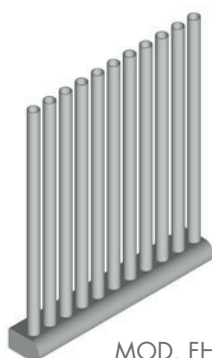


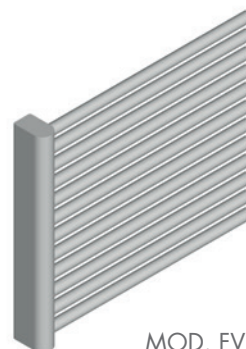
The Form F2H and F2V radiator is also produced in an exclusive chrome plated

version to obtain a particular effect in the room. FORM CROM is produced as

standard in the sizes shown in the table (max sizes).



MOD. FHR



MOD. FVR

FORM CROM (t: vertical tubes)

| MOD. | L cm | 32 | 38 | 44 | 50 | 56 | 62 | 68 |
|---------|---------|-----------------|-----------------|-----------------|------------------|------------------|------------------|------------------|
| H cm | (n° t.) | (16t) | (19t) | (22t) | (25t) | (28t) | (31t) | (34t) |
| | ▲▽ cm | 28 | 34 | 40 | 46 | 52 | 58 | 64 |
| FHR 180 | € | 1534,00 594w | 1661,40 706w | 1789,80 817w | 1936,80 928w | 2177,10 1039w | 2418,60 1150w | 2659,10 1263w |
| FHR 190 | € | 1609,20 622w | 1741,40 738w | 1872,50 855w | 2030,90 972w | 2278,50 1089w | 2534,30 1206w | 2786,80 1322w |
| FHR 200 | € | 1680,70 653w | 1820,10 775w | 1955,50 898w | 2120,90 1020w | 2384,00 1142w | 2646,90 1264w | 2909,80 1386w |

EN 442 Watt Δt 50K (Δt 40K = $W \times 0,755$) - (Δt 30K = $W \times 0,526$)

FORM CROM (t: horizontal tubes)

| MOD. | L cm | 60 | 80 | 100 | 120 | 140 | 160 | 180 | 200 |
|--------|---------|-----------------|-----------------|-----------------|-----------------|------------------|------------------|------------------|------------------|
| H cm | (n° t.) | (16t) | (19t) | (22t) | (25t) | (28t) | (31t) | (34t) | (37t) |
| | ▲▽ cm | 57,8 | 77,8 | 97,8 | 117,8 | 137,8 | 157,8 | 177,8 | 197,8 |
| FVR 32 | € | 1144,90 200w | 1208,80 267w | 1217,20 334w | 1270,00 400w | 1322,50 467w | 1439,60 534w | 1534,00 601w | 1680,70 667w |
| FVR 38 | € | 1237,00 238w | 1312,80 318w | 1318,70 397w | 1366,80 476w | 1422,10 555w | 1557,90 635w | 1661,40 714w | 1820,10 794w |
| FVR 44 | € | 1332,60 275w | 1404,60 367w | 1417,20 459w | 1461,60 551w | 1536,20 643w | 1672,70 734w | 1789,80 826w | 1955,50 918w |
| FVR 50 | € | 1445,10 318w | 1524,30 423w | 1535,70 529w | 1589,70 634w | 1653,90 740w | 1808,00 846w | 1936,80 952w | 2120,90 1058w |
| FVR 56 | € | 1579,60 356w | 1616,60 474w | 1726,50 593w | 1783,80 711w | 1859,90 830w | 2034,70 949w | 2177,10 1067w | 2384,00 1186w |
| FVR 62 | € | 1807,80 395w | 1907,20 526w | 1920,20 658w | 1979,60 790w | 2070,20 922w | 2259,70 1054w | 2418,60 1185w | 2646,90 1317w |
| FVR 68 | € | 1879,20 433w | 2068,10 578w | 2103,40 722w | 2180,90 866w | 2272,50 1010w | 2481,70 1154w | 2659,10 1299w | 2909,80 1443w |

EN 442 Watt Δt 50K (Δt 40K = $W \times 0,755$) - (Δt 30K = $W \times 0,526$)

Lengths/Longueurs

Δt different from 50 K: consult Technical data Brem

STANDARD PRODUCTION

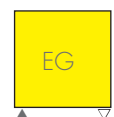
Chrome-plated brackets - Tolerance ± 3 mm
Chrome-plated air vent $\varnothing 1/8''$
MAXIMUM OPERATING PRESSURE, 8 BAR.

PRODUCTION ON REQUEST

Ceiling brackets and feet page 285
Chrome-plated feet and fixings, by estimate

STANDARD FITTINGS

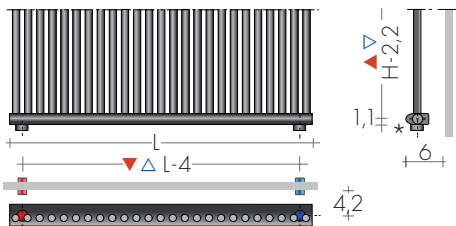
EG $\varnothing 1/2''$. On request 3/8''
Fittings AC or BD on request
Special fittings, page 286



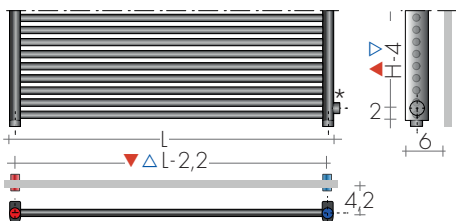
TAPPING CENTRES

EG vertical standard fittings
Side fittings, on request without extra

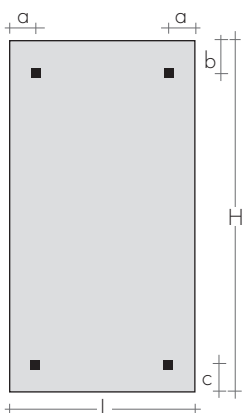
FHR MODEL



FVR MODEL



* Coupling protrusion 1 cm

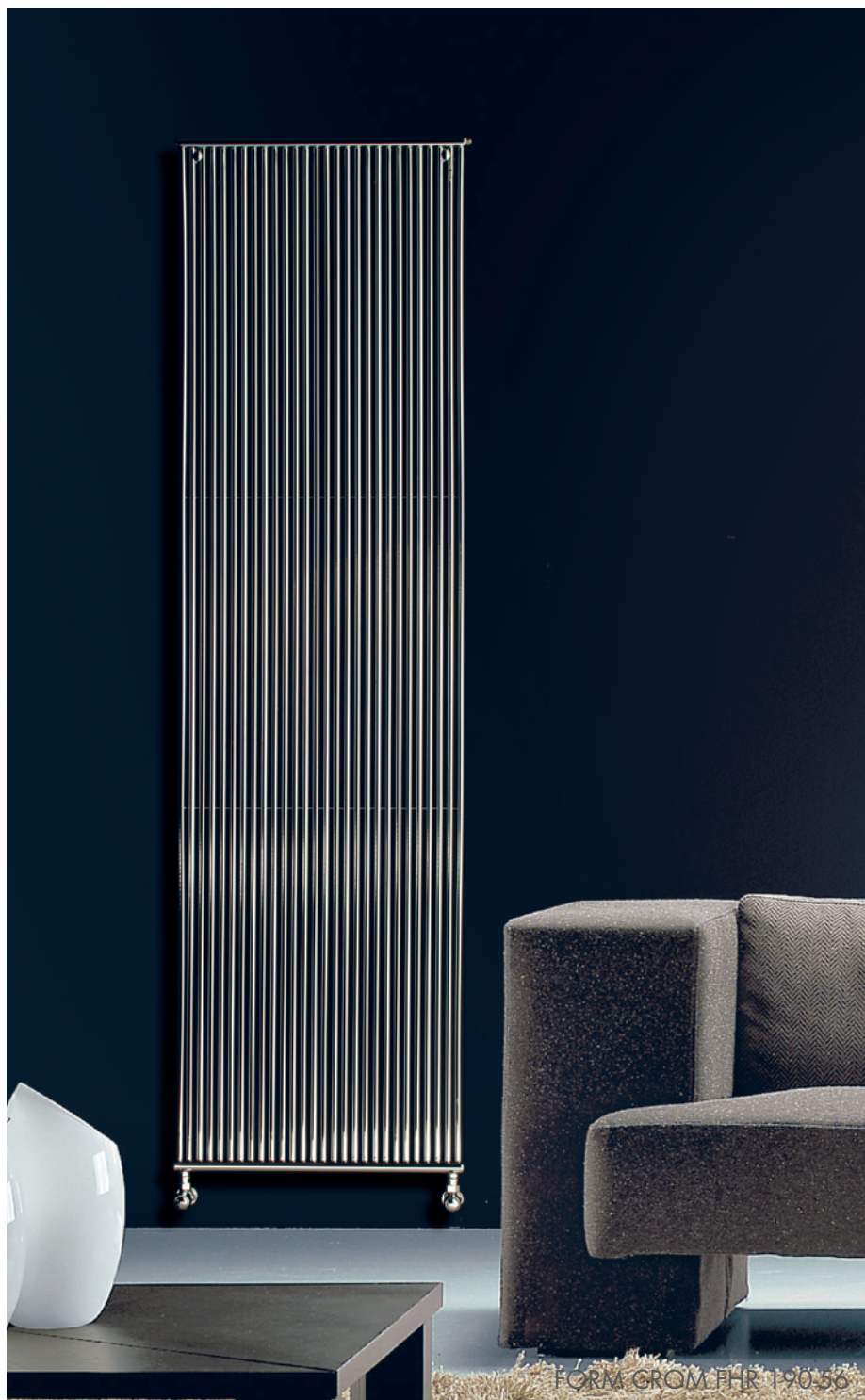


FIXINGS
Brackets included



Art. M4C

| Mod. | a cm | b cm | c cm |
|------|---------|---------|---------|
| FH | 4 | 3,5 | 3,5 |
| FV | 3,5 | 4 | 4 |



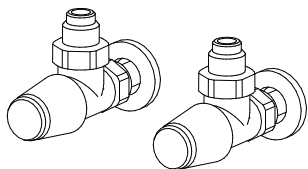
FORM GROM FHR 190/36

RECOMMENDED VALVES

CHROME PLATED VALVES KIT WITH:

- n°2 Valves with O-ring Tangs
- n°2 Fittings (multilayer ø16, copper ø12,14)
- n°2 Round washers

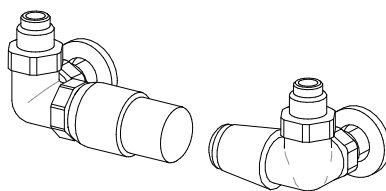
On request: Polished stainless tube cover
(to be cut to right size) Art. CA18 10,80€



ANGLED TON VALVES KIT
page 277

Art. KVS 119,20€

ANGLED MINI VALVES KIT page 278
chrome-plated or white color Art. KMS 107,80€



SIDE CONTROL TON VALVES KIT with
THERMOSTATIC head Art. KTL 177,10€

ANGLED TON VALVES KIT with
THERMOSTATIC head Art. KTS 165,50€

REMOTE FITTINGS Art.REM 36,60€
Remote fittings at the rear: ▲▼ EG



1,1±



REMOTE VALVES ASSEMBLY KIT p. 281 with:
- n°2 Fittings (multilayer ø16, copper ø12,14)

REMOTE TON VALVES ASSEMBLY KIT
Art. KVG 153,60€

REMOTE TON VALVES ASSEMBLY KIT with
THERMOSTATIC head Art. KVG T 199,80€