

# MANT

design Luigi Brembilla

A striking heated radiator, from the essential lines with a thin panel (just 2.3 cm thick)

with a practical double towel rails open on three sides.

On request, the towel rails can be painted in a BREM different colour from the plate.

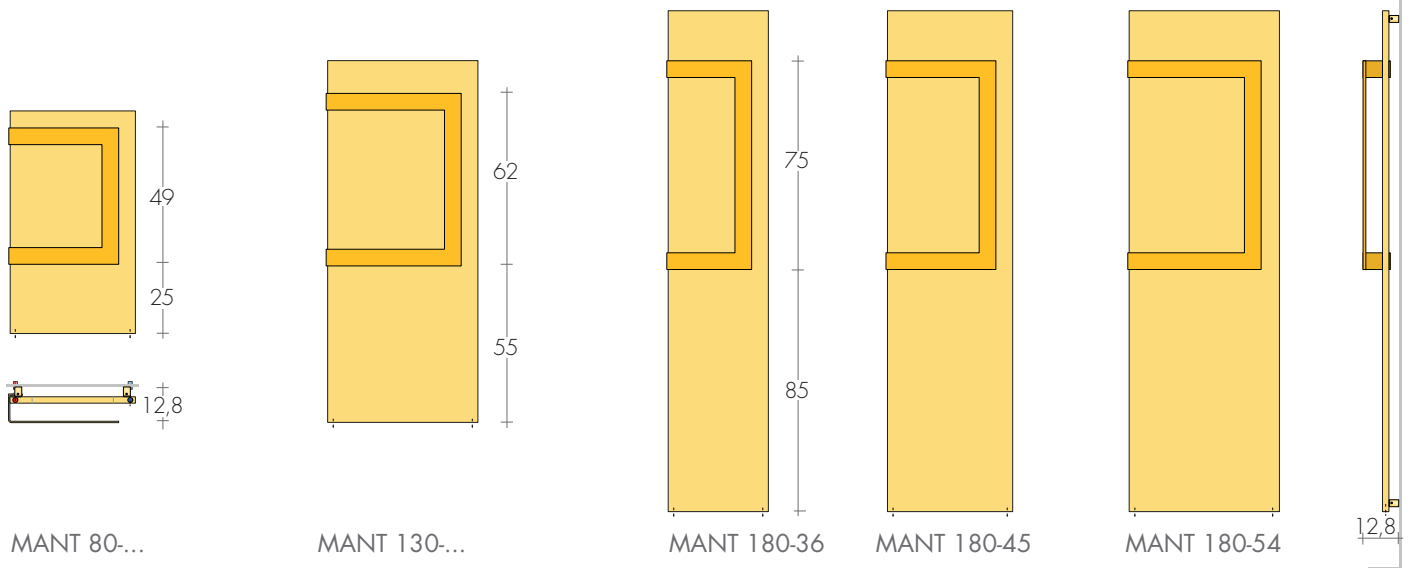
## DIMENSIONS

Widths: 36 / 45 / 54 cm

Heights: 80 / 130 / 180 cm

Depth: 9,5 cm

Depth: from wall 12,8 cm



MANT 80-...

MANT 130-...

MANT 180-36

MANT 180-45

MANT 180-54

12,8

MODEL	H/L cm	Standard white sablé SB9016 €	$\Delta t$ 50K watt	EN 442 $\Delta t$ 40K watt	$\Delta t$ 30K watt	▲ ▼ t.c. cm	Height H cm	Width L cm	Weight M Kg	Volume V dm <sup>3</sup>	DUAL FUEL VERSION with E.H.E. and* Watt €	
MANT	80-45	862,70	399	302	210	41	80	45	11,3	3,8	400	103,40
MANT	80-54	940,50	478	362	251	50	80	54	13,5	4,4	500	105,60
MANT	130-45	1032,50	643	487	338	41	130	45	18,2	6,0	650	107,80
MANT	130-54	1121,20	770	583	405	50	130	54	21,8	6,8	800	112,60
MANT	180-36	1100,10	714	540	376	32	180	36	20,3	7,0	650	107,80
MANT	180-45	1202,30	887	671	466	41	180	45	25,1	8,1	900	116,20
MANT	180-54	1301,70	1061	803	558	50	180	54	30,0	9,2	900	116,20
MANT-L	180-45	1450,40	1181	894	621	41	180	45	34,4	8,1	1200	124,50

On request, free of charge, the bar on the right

\*Dual fuel valve or T to be added p.207  
Thermostats p.208-209

## TOWEL BAR MANT: STANDARD COLORS

- white sablé SB 9016 - quartz grey SB 7039
- black sablé SB 9005 - same color as the radiator

In one paintwork to Brem color list different from the radiator  
extra 52,90€

## STANDARD PRODUCTION

White sablé SB9016 paintwork, B15 brackets  
Tolerance  $\pm$  3mm - Air vent  $\varnothing$  1/8"

MAXIMUM OPERATING PRESSURE 4 BAR

## PRODUCTION ON REQUEST

Paintwork to BREM color list with colored  
brackets +15/25%

Electric version e.Mant, page 246

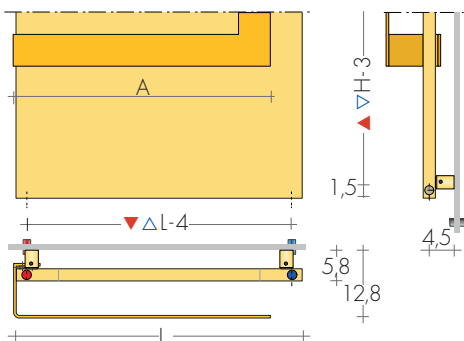
## STANDARD FITTING

EG  $\varnothing$  3/8"  
Fittings  $\varnothing$  1/2" on request  
Special fittings, page 279



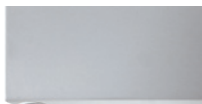
## TAPPING CENTRES

Side fittings on request  $\varnothing 3/8''$  or  $\varnothing 1/2''$   
Extra Art. AS 91,20€

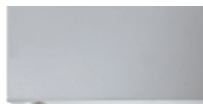


## TOWEL BAR MANT WIDTH

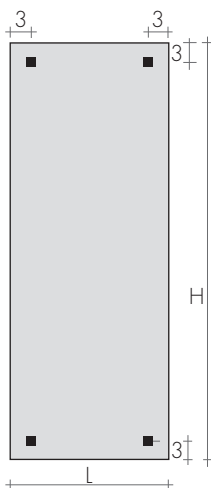
L36 A 30,5 - L45 A 39,5 - L54 A 48,5 cm



Fitting  $\varnothing 3/8''$   
STANDARD  
(without sleeves)



Fitting  $\varnothing 1/2''$   
ON REQUEST  
(with sleeves)



FIXINGS  
Brackets included



B35 bracket

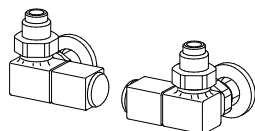


MANT 130-54

## RECOMMENDED VALVES

CHROME VALVES KIT with:

- n°2 Valves with chrome tailpieces
- n°2 Fittings (multilayer  $\varnothing 16$ , copper  $\varnothing 12, 14$ )
- n°2 Chrome wall plates  $\varnothing 48$ , hole  $\varnothing 16$



SIDE CONTROL QUADRA VALVES KIT

page 271

Art. KQL

191,20€

Extra for BREM color list

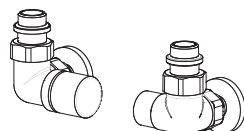
53,40€

SPECIAL FINISHES

page 267

Finishes Gold, Bronze, Brushed Nickel for 2 valves

Brushed Nickel FITTING KIT extra Art. RN 30,50€



SIDE CONTROL CYL VALVES KIT with THERMO-

STATIC option, page 273

Art. KCL

162,50€

Extra for BREM color list

53,40€

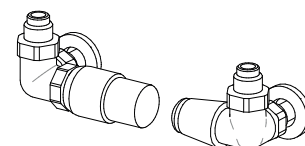
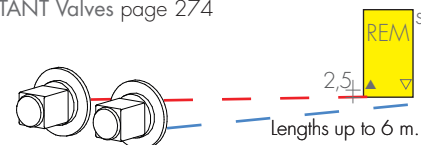
REMOTE FITTINGS

Art. REM

42,10€

Tapping centres: at the rear  $\blacktriangle \nabla$  EG L-5 cm

DISTANT Valves page 274



SIDE CONTROL TON VALVES KIT with THERMO-

STATIC Head, page 269

Art. KTL

203,70€