

The PLUS 12 towel heater has three series of ø14 mm thin tubes to offer high output.

The manifolds, with their round tubes, are extremely compact to minimise space.

The PLUS 12 comes in all the shades in the Brem colour list.

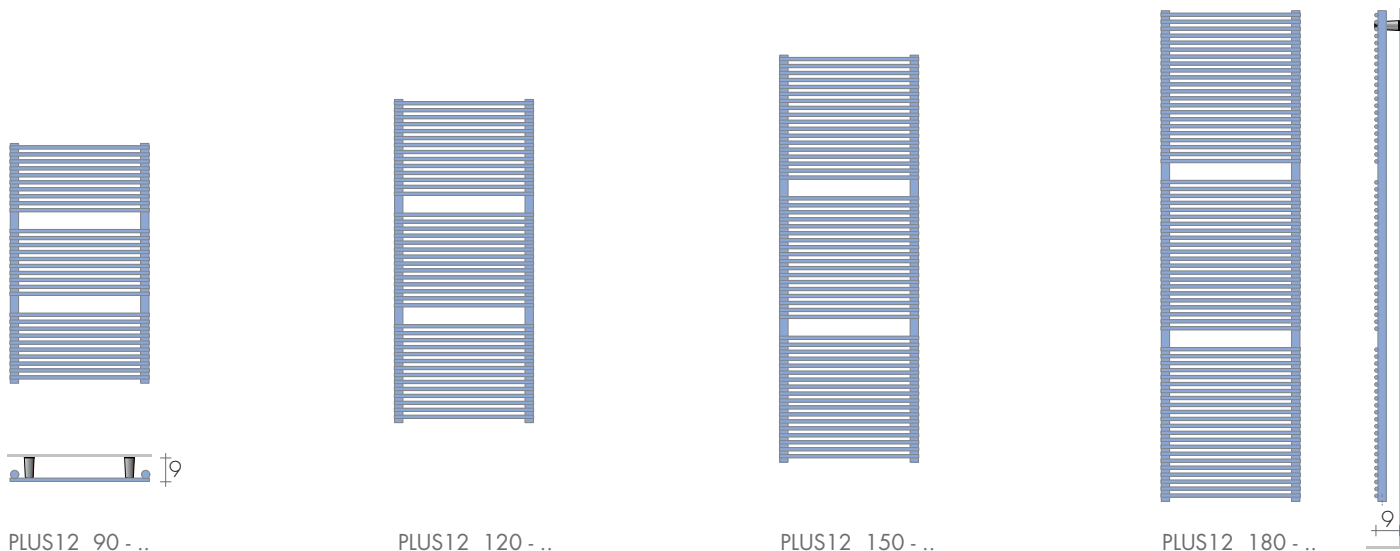
DIMENSIONS

Widths: 40 / 50 / 60 / 75 cm

Heights: 86/116/146/176 cm

Depth: 4 cm

Depth from wall: 9 cm



MODEL	Hl cm	white sablé standard €	EN 442		▲▽ t.c. cm	Height H cm	Width L cm	Weight M Kg	Volume V dm³	MIXED VERSION*(EHE cl.II) with:		
			Δt 50 K watt	Δt 30 K watt						cablé ^o €	digital thermostat W €	
PLUS 12	90-40	326,40	415	222	37	86	40	7,2	1,94	89,90	400	150,20
PLUS 12	90-50	332,50	481	258	47	86	50	7,9	2,15	91,80	500	152,20
PLUS 12	120-40	464,20	575	308	37	116	40	9,4	2,71	91,80	500	152,20
PLUS 12	120-50	477,80	667	358	47	116	50	11,0	2,99	93,70	650	160,20
PLUS 12	150-40	532,10	725	389	37	146	40	12,0	3,43	97,90	800	163,30
PLUS 12	150-50	548,70	841	451	47	146	50	14,2	3,81	97,90	800	163,30
PLUS 12	150-60	569,50	976	523	57	146	60	16,4	4,19	101,00	900	163,30
PLUS 12	180-40	608,20	892	478	37	176	40	14,6	4,18	101,00	900	163,30
PLUS 12	180-50	636,70	1035	555	47	176	50	17,6	4,58	101,00	900	163,30
PLUS 12	180-60	653,00	1201	644	57	176	60	20,0	5,06	108,30	1200	170,60
PLUS 12	180-75	738,90	1449	777	72	176	75	23,6	5,78	117,70	1500	180,00

▶ Ready Stock

Δt 40K = Watt Δt 50Kx0,755

*TR accessory or mixed valve
^oRadio frequency chronothermostat p.227

STANDARD PRODUCTION

White "sablé" paintwork - M8GB brackets
 Tolerance ± 3 mm - Air vent ø 1/8"

MAXIMUM OPERATING PRESSURE 6 BAR

PRODUCTION ON REQUEST

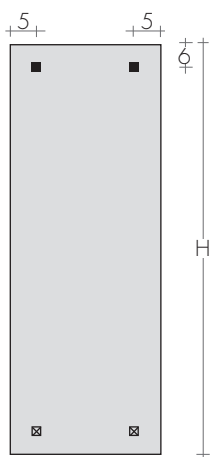
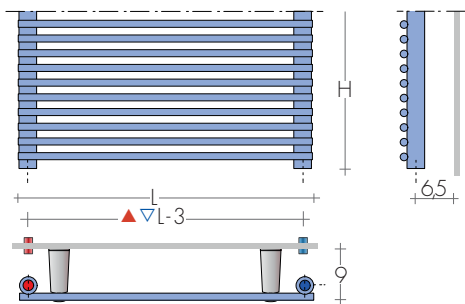
Paintwork to Brem color list with
 chrome-plated M8C brackets +15/25%
 Electric version e.Plus12, page 266

STANDARD FITTINGS

EG ø 1/2"
 Brem valves, page 275
 Accessories, page 282



TAPPING CENTRES



FIXINGS
Brackets included



Art. M8..

⊠ PLUS 12 H 180 cm



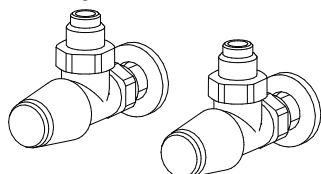
PLUS 12 150-50

RECOMMENDED VALVES

CHROME PLATED VALVES KIT WITH:

- n°2 Valves with O-ring Tangs
- n°2 Fittings (multilayer ø16, copper ø12,14)
- n°2 Round washers

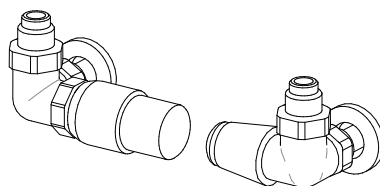
On request: Polished stainless tube cover (to be cut to right size) Art. CA18 10,80€



ANGLED TON VALVES KIT Art. KVS 119,20€

ANGLED TON VALVES KIT with THERMOSTATIC head Art. KTS 165,50€

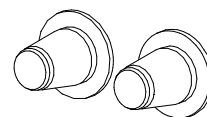
ANGLED MINI VALVES KIT page 278 chrome-plated or white color Art. KMS 107,80€



SIDE control TON VALVES KIT with THERMOSTATIC head Art. KTL 177,10€

SIDE control TON VALVES KIT page 277 Art. KVL 130,90€

REMOTE FITTINGS Art.REM 36,60€ remote fittings at the rear (EG tapping centres)



2,5⊠ REM

REMOTE VALVES ASSEMBLY KIT p. 281 with: - n°2 Fittings (multilayer ø16, copper ø12,14)

REMOTE TON VALVES ASSEMBLY KIT Art. KVG 153,60€

REMOTE TON VALVES ASSEMBLY KIT with THERMOSTATIC head Art. KVGt 199,80€